

第20回日本乳癌学会 中部地方会

【教育セミナー】 2023年9月2日(土)

支えよう 地方の乳癌診療



会期 2023年 9月2日(土) ~ 3日(日)

形式 ハイブリッド開催 (現地/オンライン 同時開催)

会場 山梨県立大学池田キャンパス 〒400-0062 山梨県甲府市池田 1-6-1



【当番世話人】
井上 正行
山梨県立中央病院乳癌外科

基礎・診断編：治療方針を変える病理所見 診療ガイドラインと治療戦略

バイオマーカー判定について (症例提示編)

埼玉医科大学国際医療センター 病理診断科

川崎 朋範





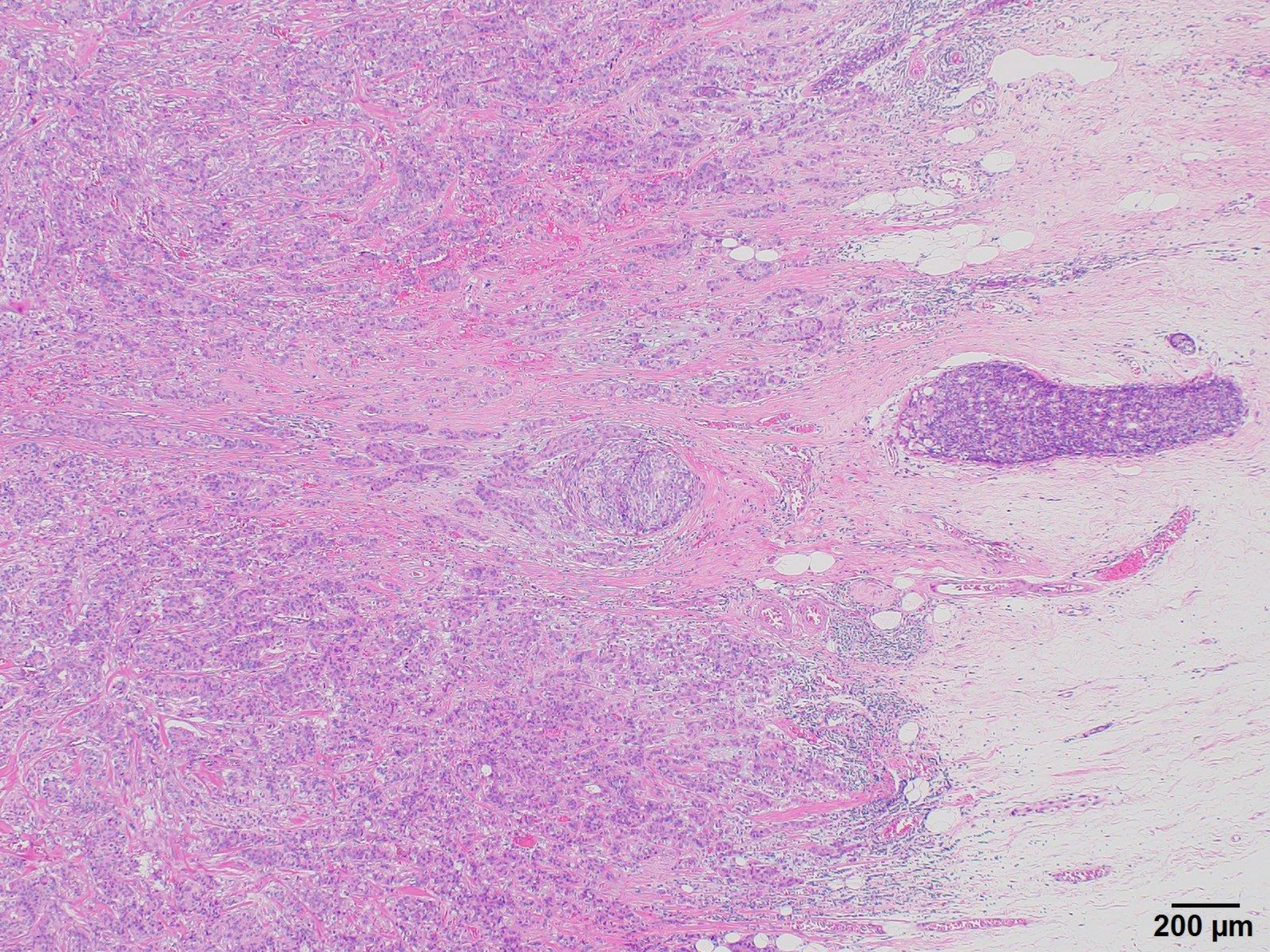
The Japanese Breast Cancer Society
since 1992



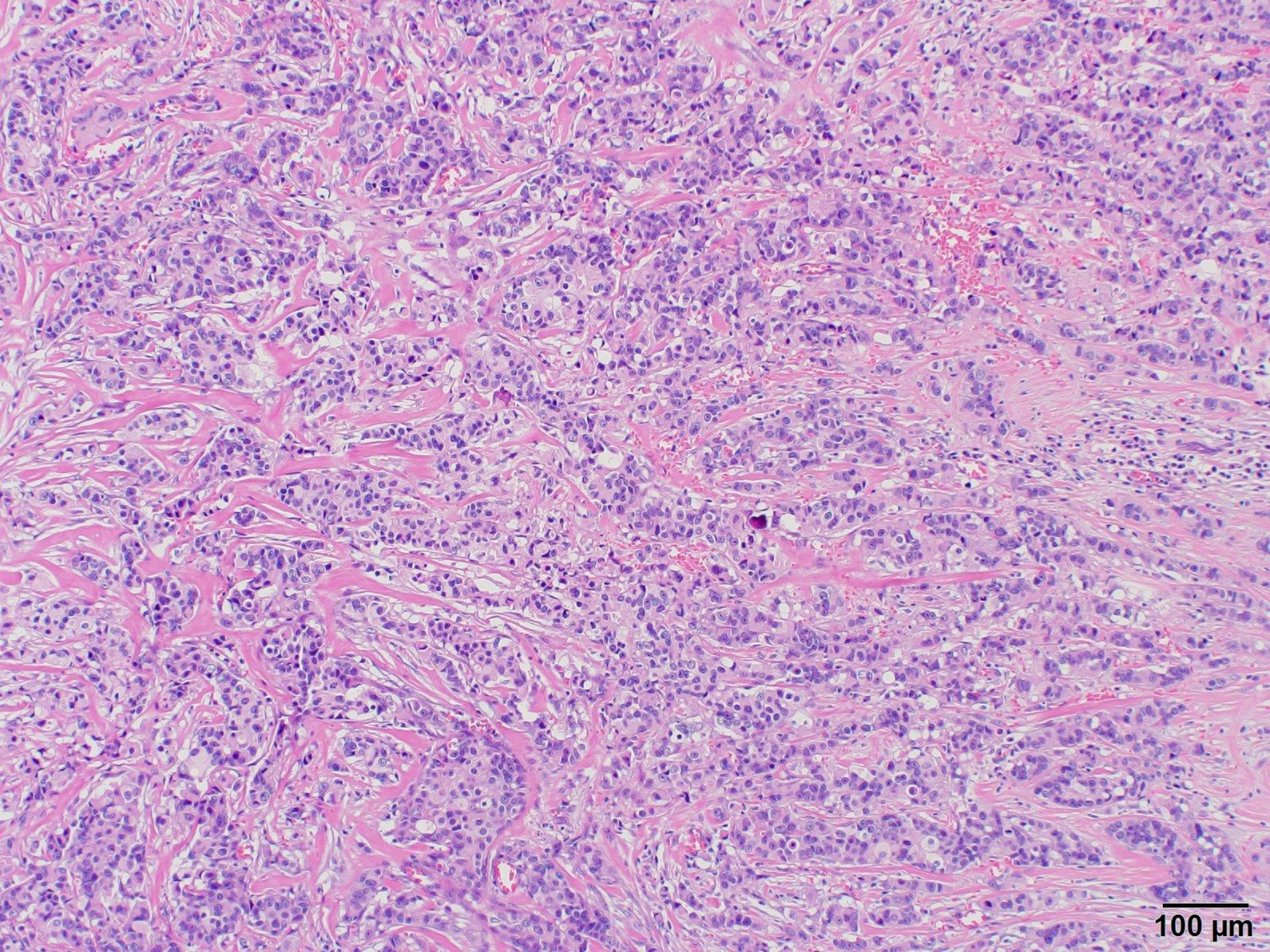
筆頭演者の利益相反状態の開示

すべての項目に該当なし

症例 1

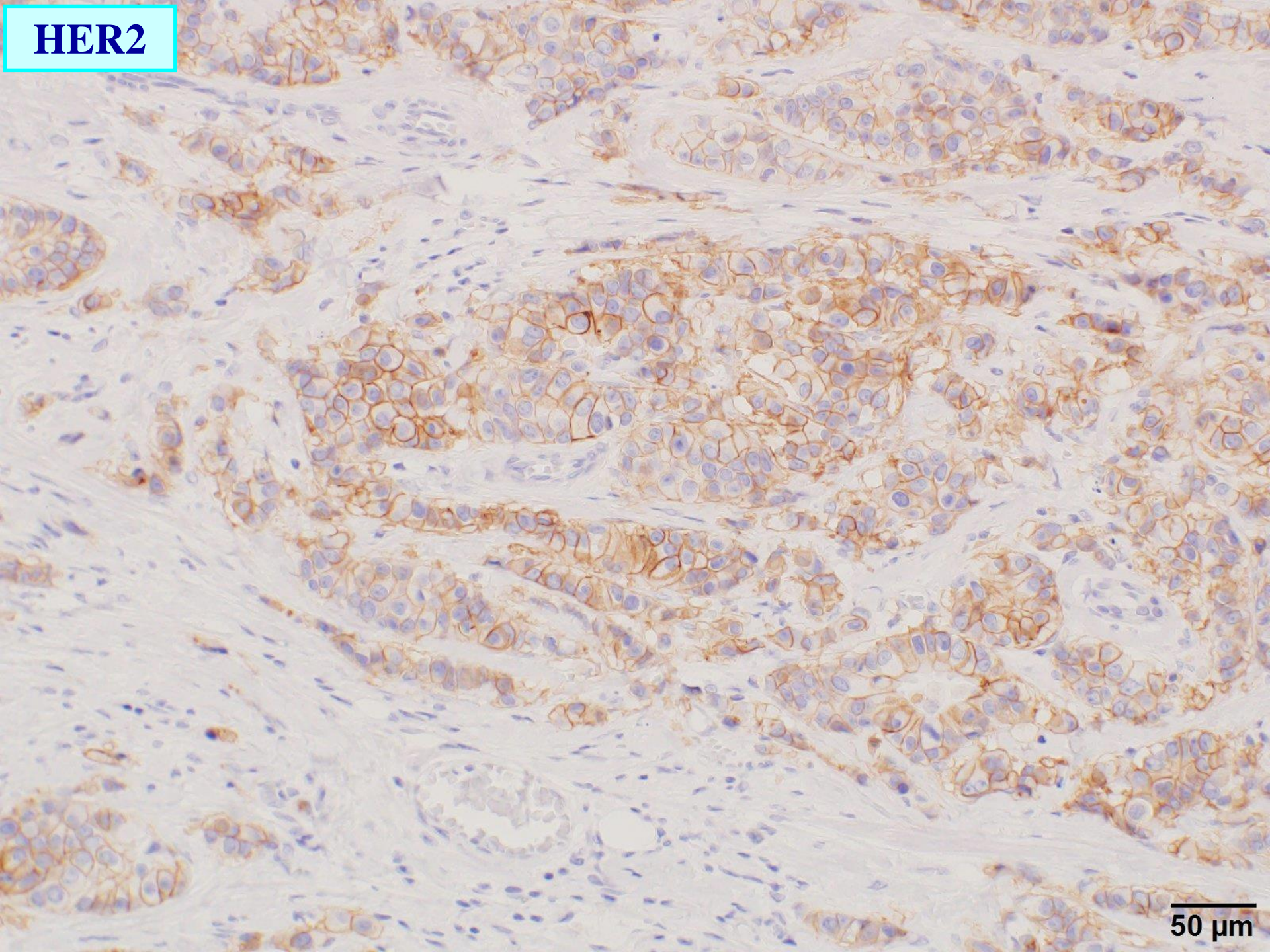


200 μm



100 μ m

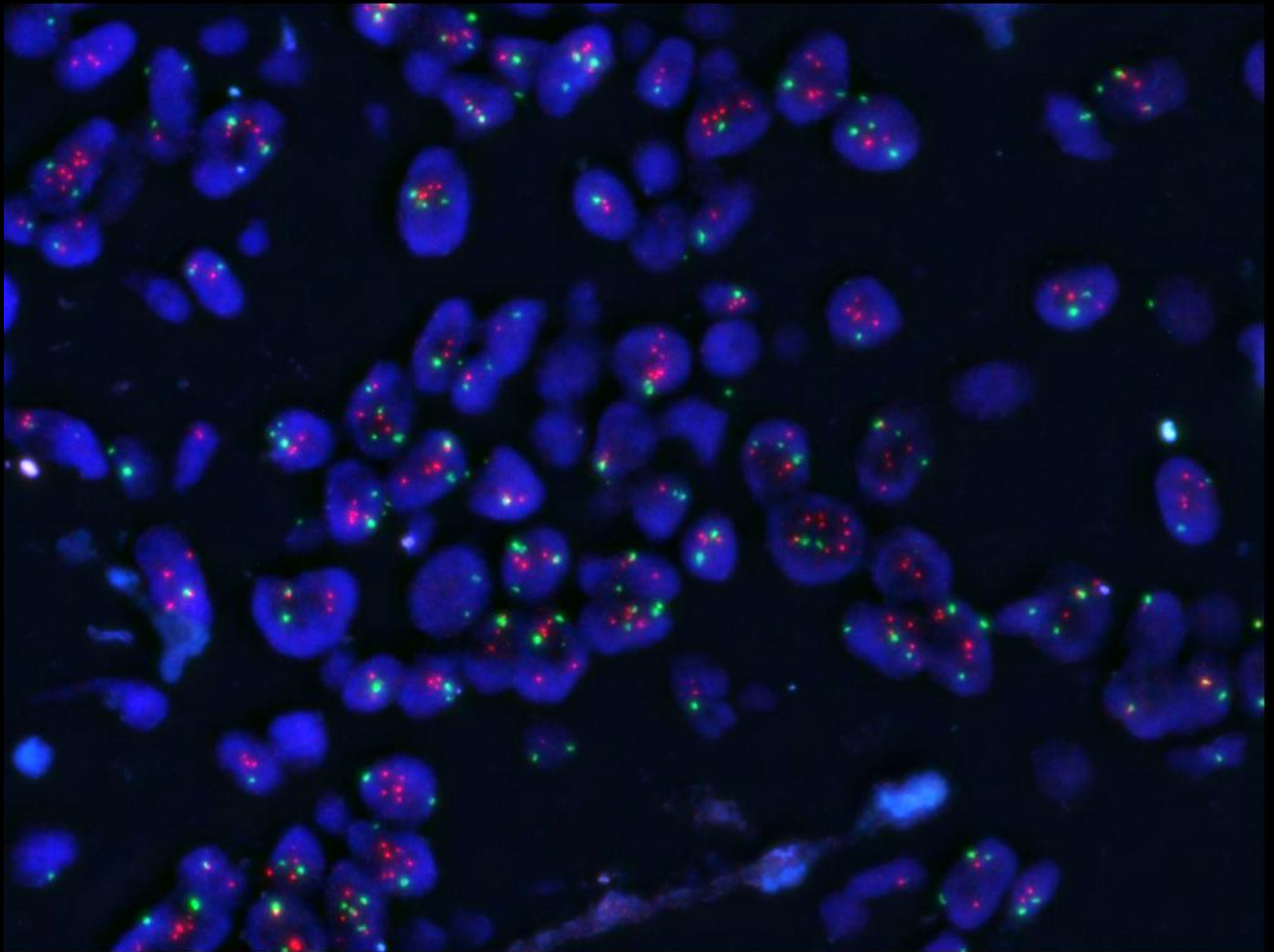
HER2



50 μm

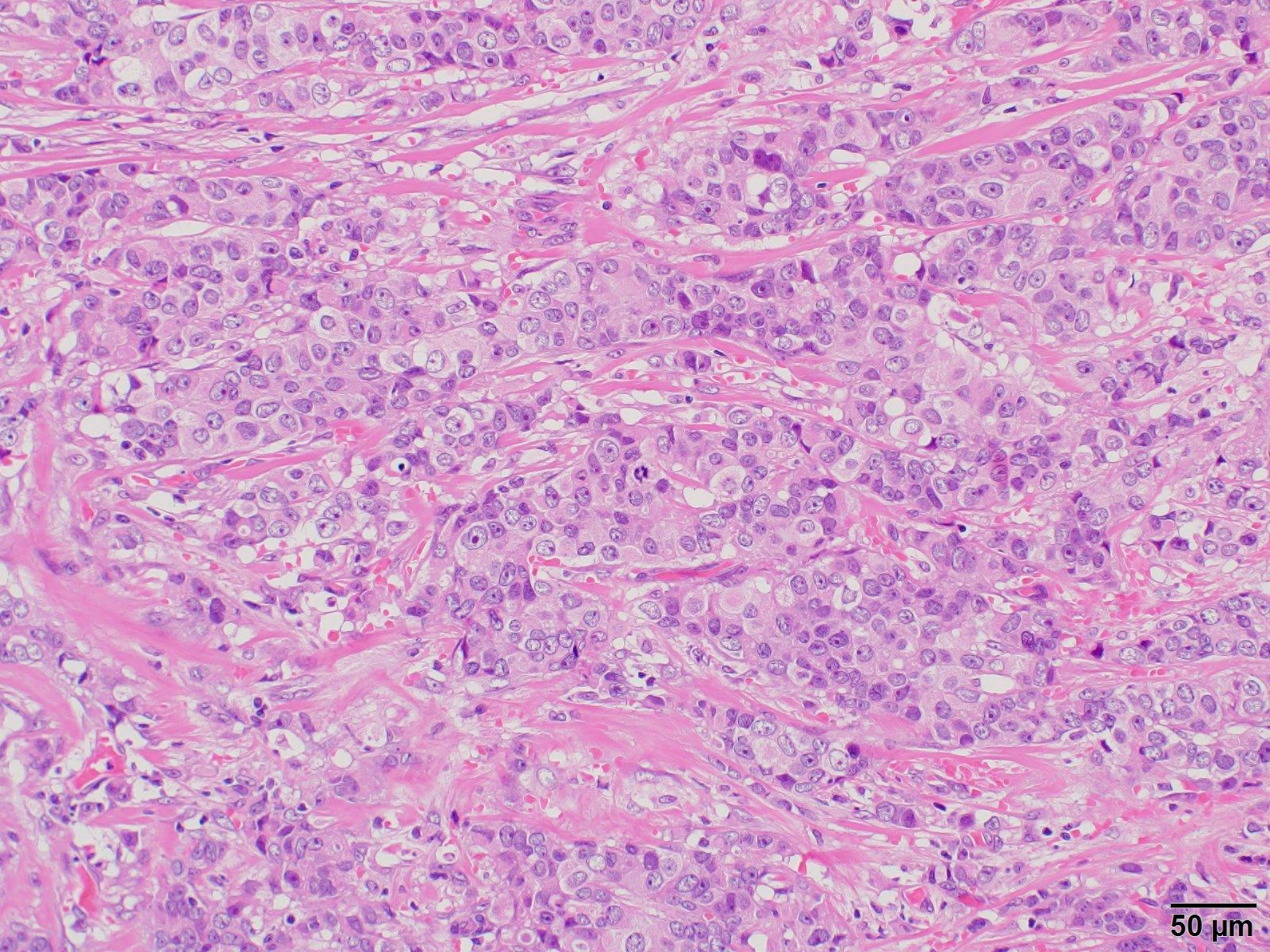
HER2 (免疫組織化学, IHC) の判定は？

HER-2 SpectrumOrange / CEP17 SpectrumGreen



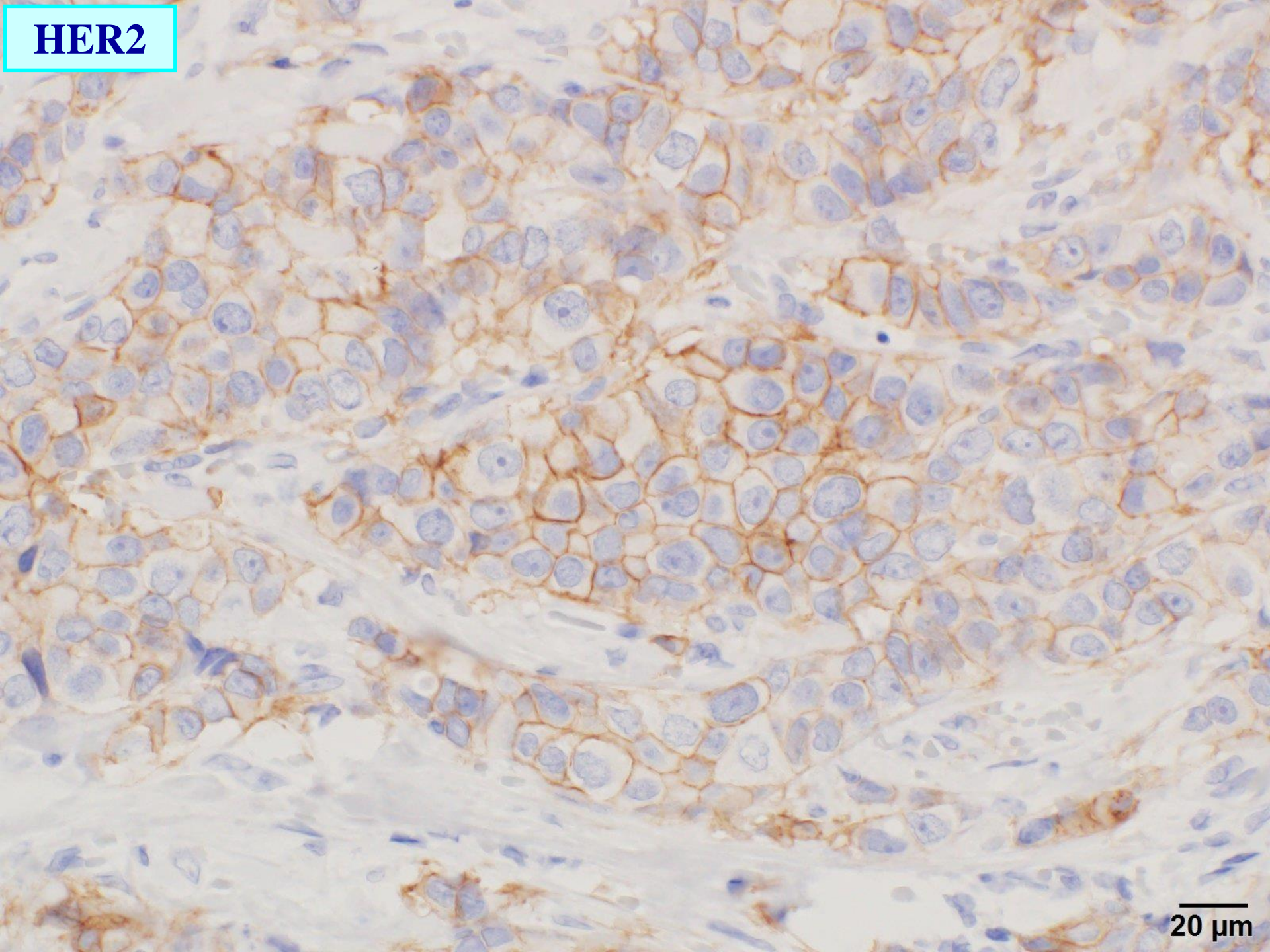
x63 #1

HER2 (FISH) の判定は？



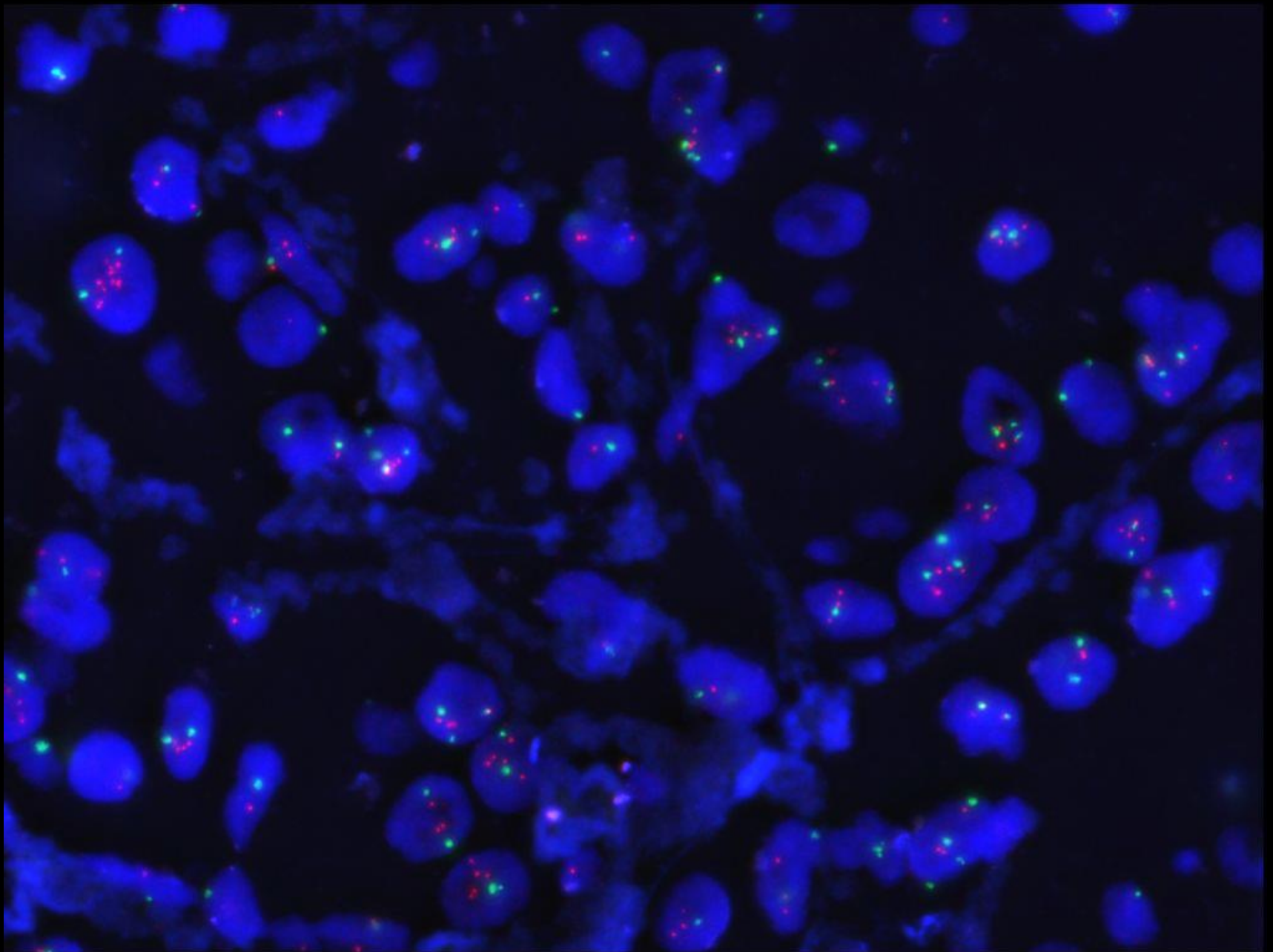
50 μ m

HER2



20 μm

HER-2 SpectrumOrange / CEP17 SpectrumGreen

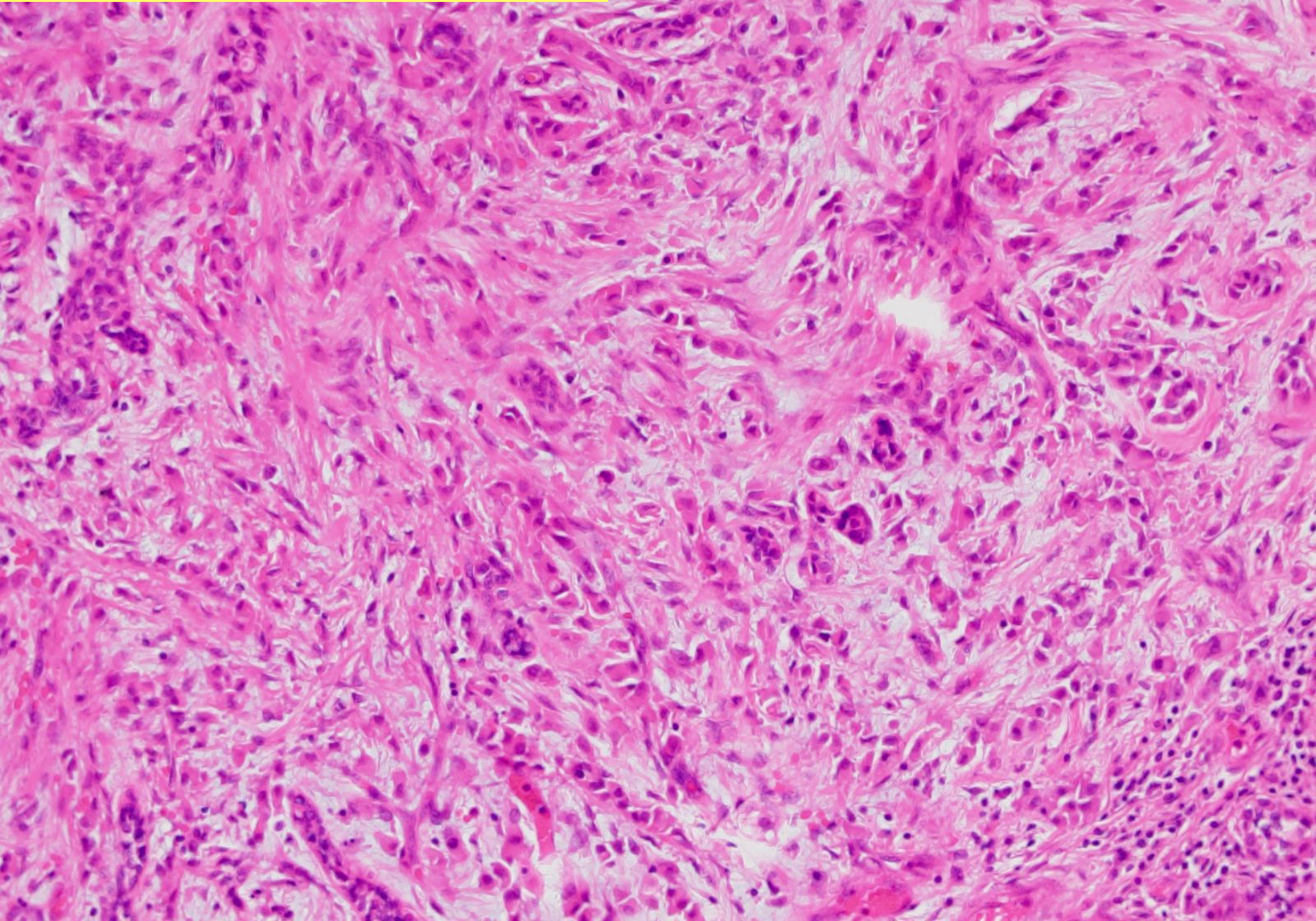


x63

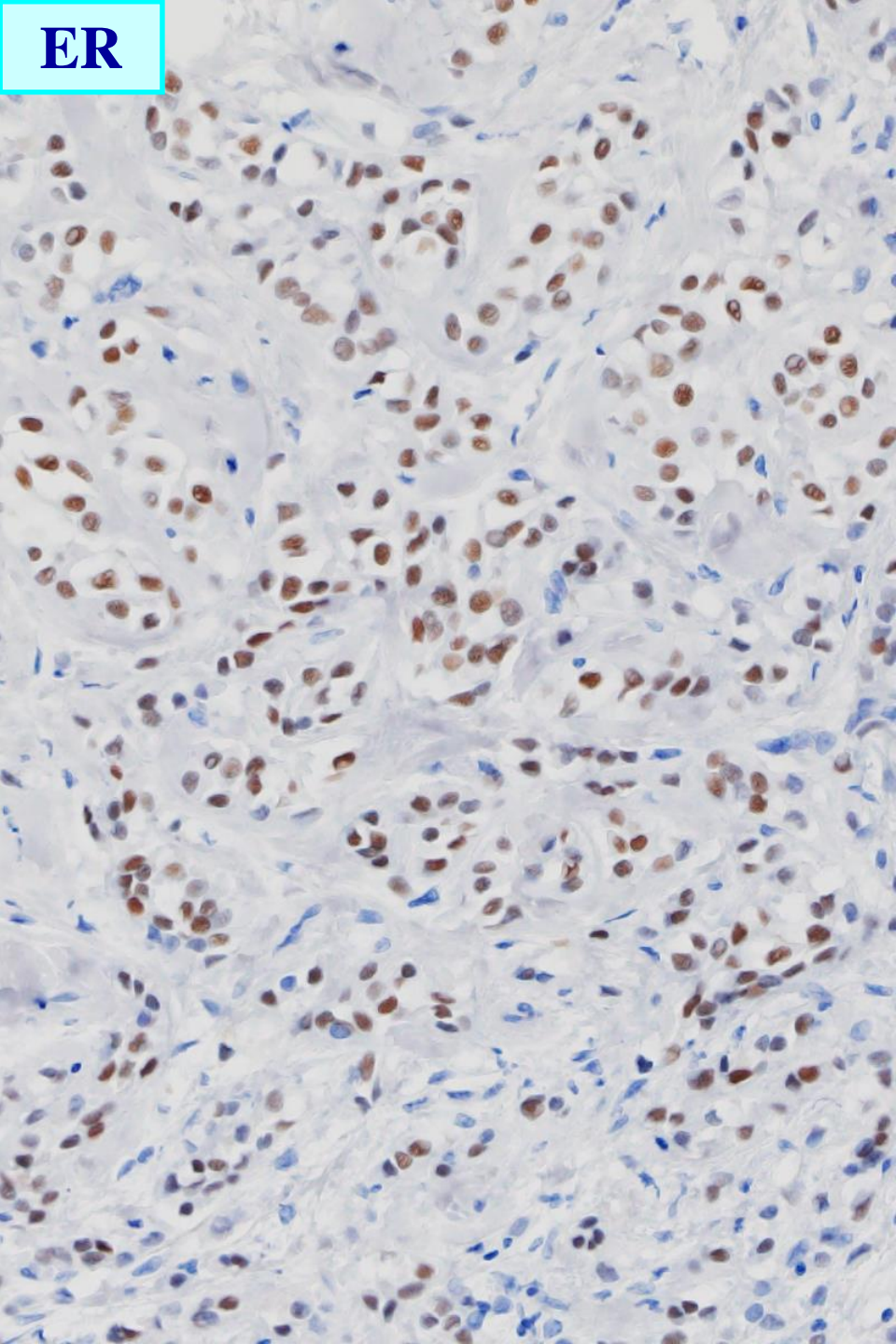
HER2 の最終判定は？

症例 2

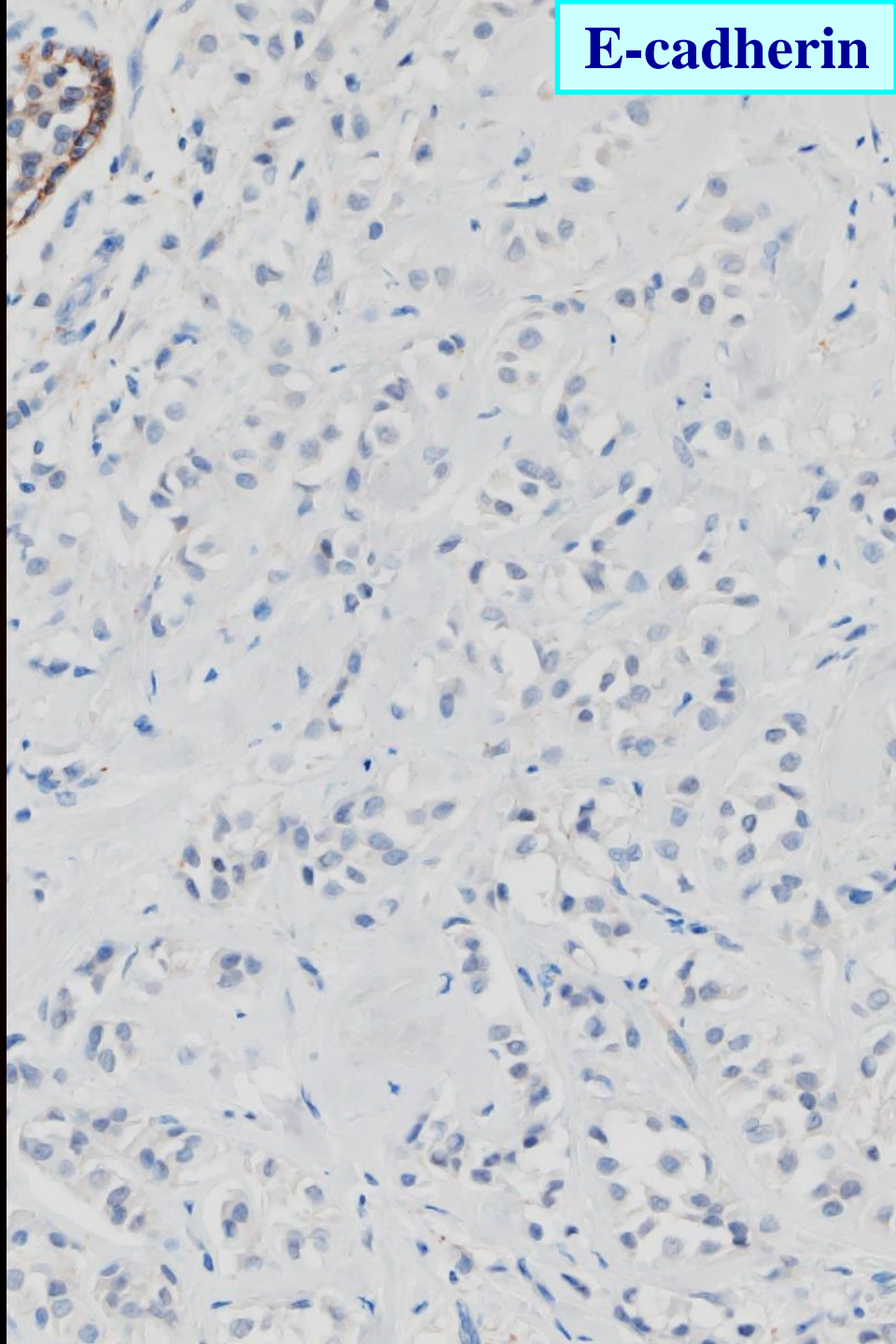
Breast cancer (7 years earlier)



ER



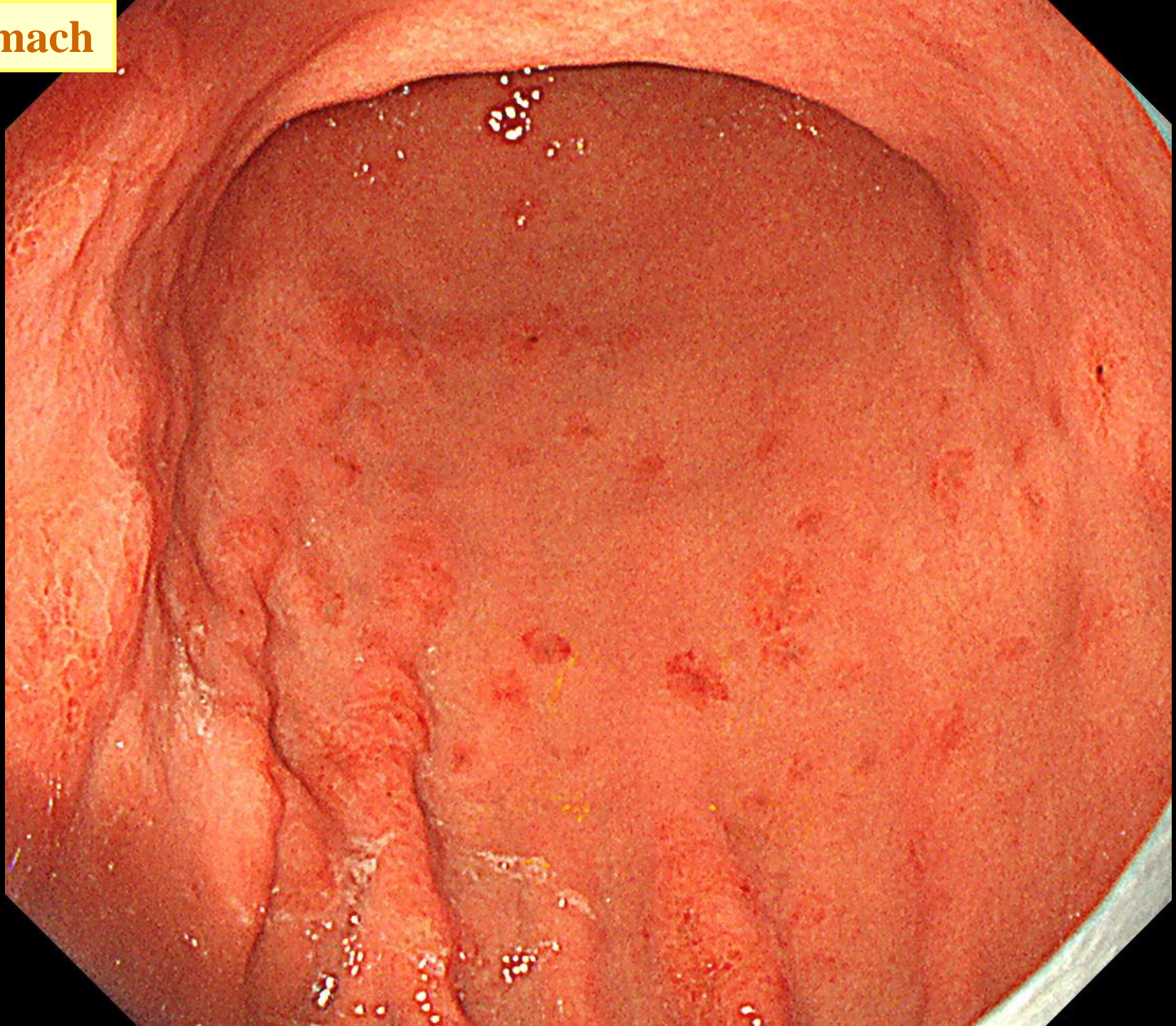
E-cadherin



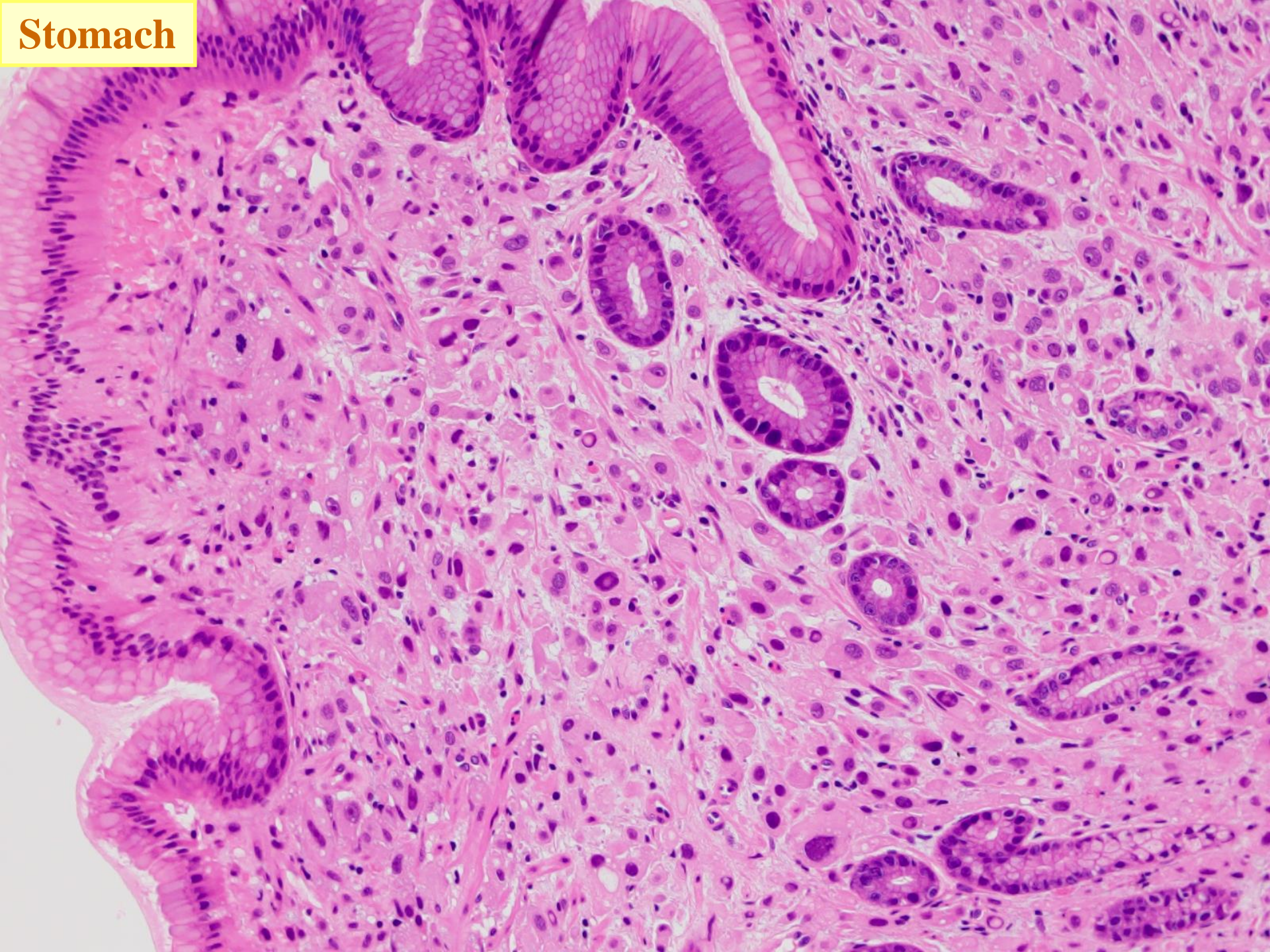
ホルモン受容体の判定は？

病理診断は？

Stomach



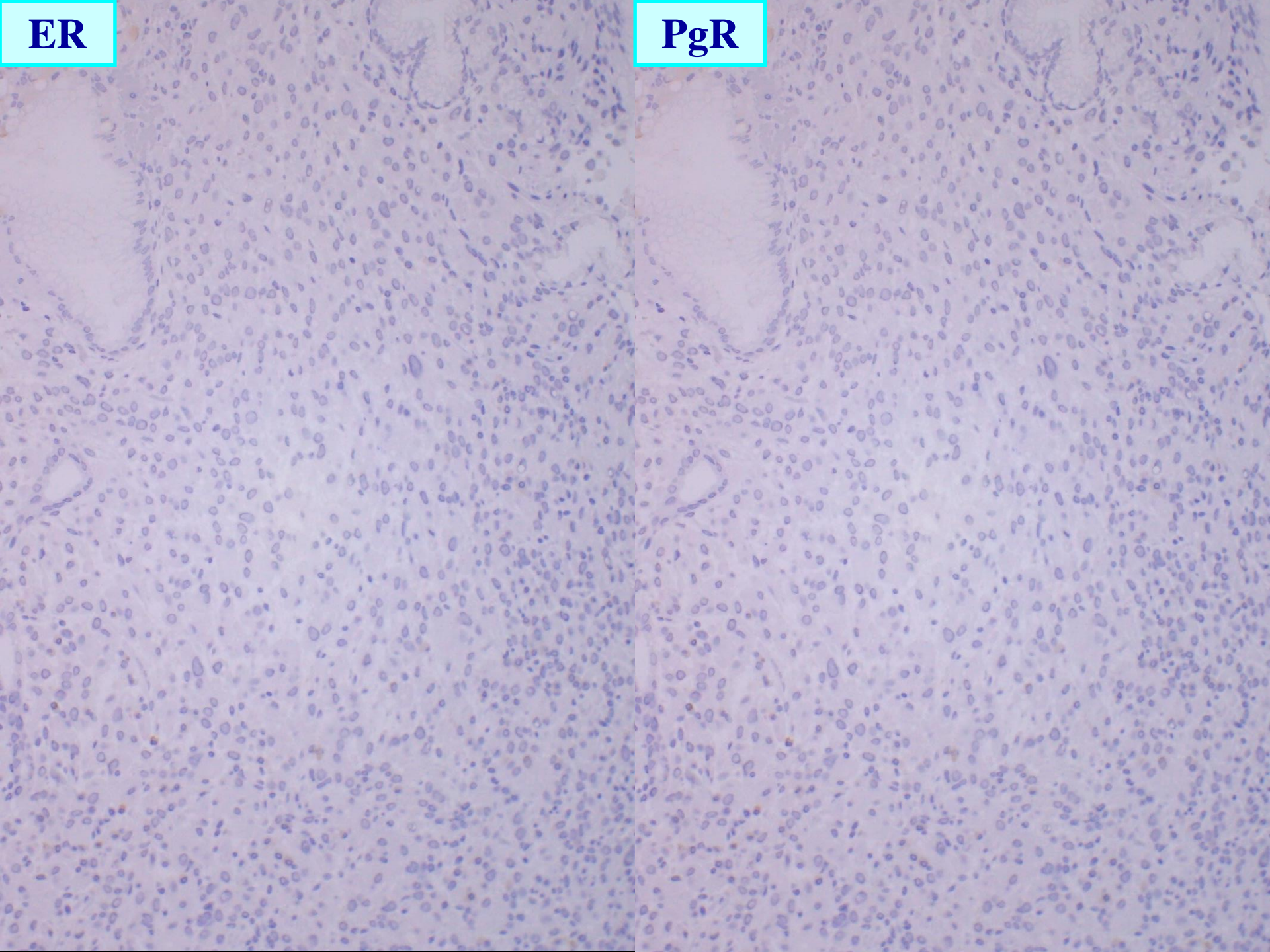
Stomach



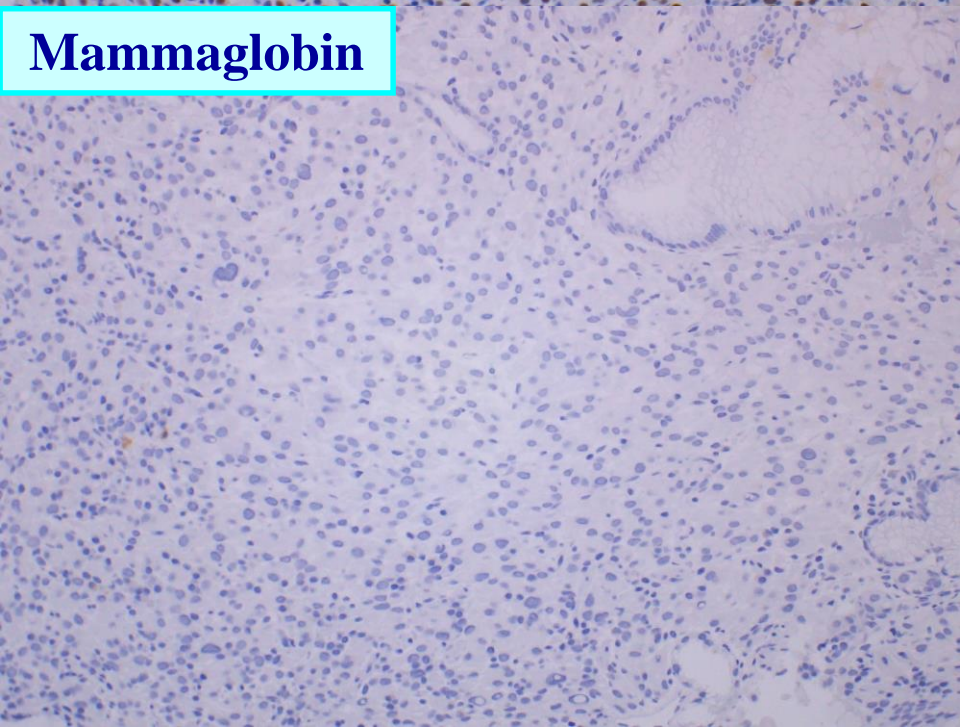
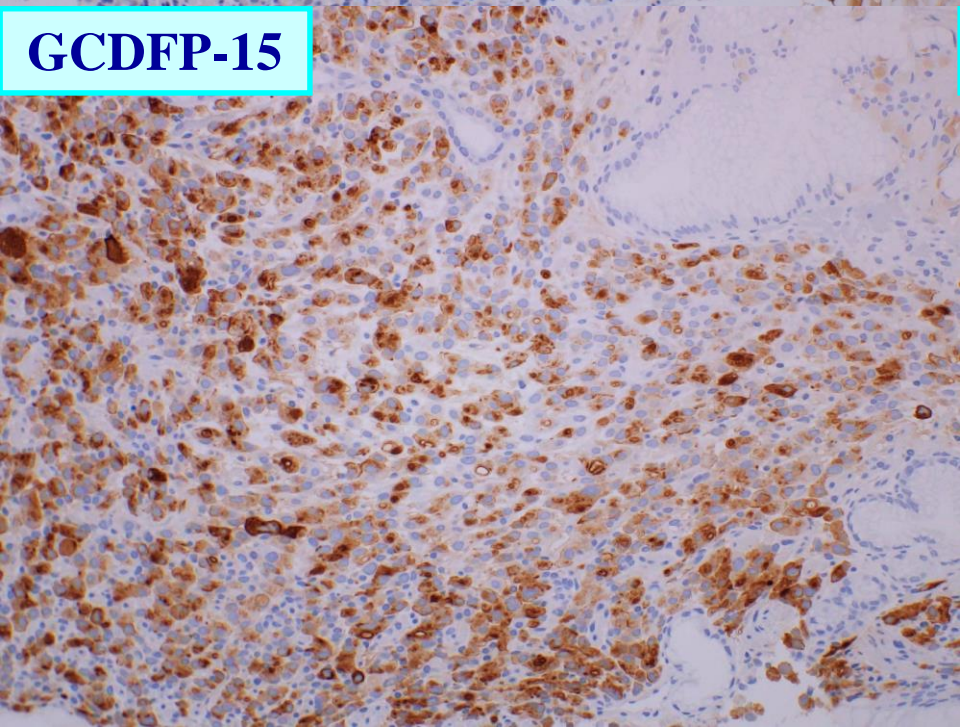
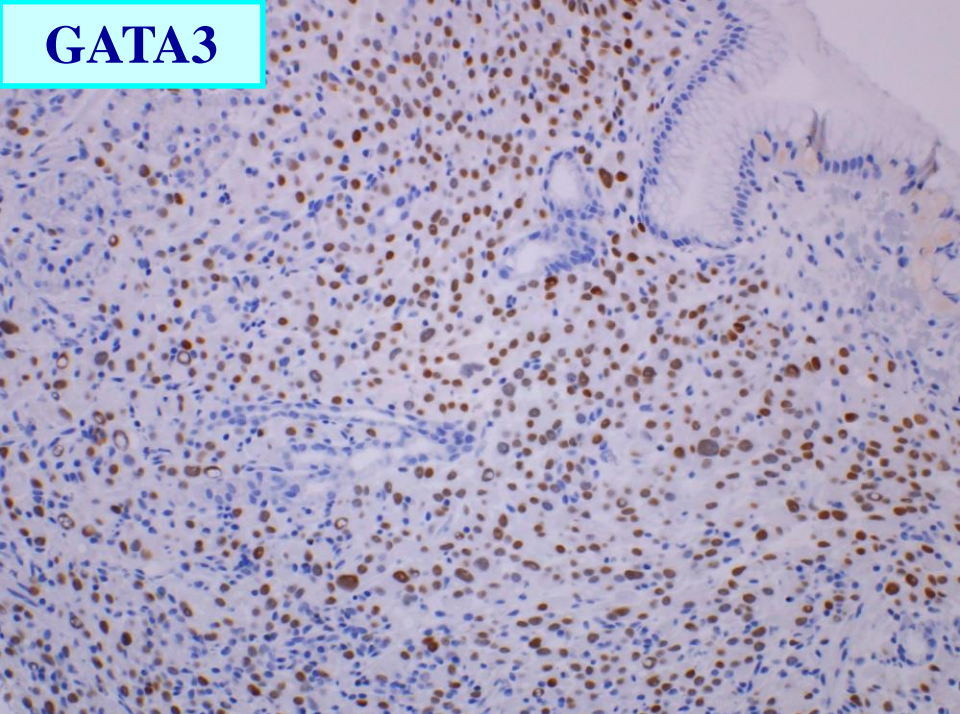
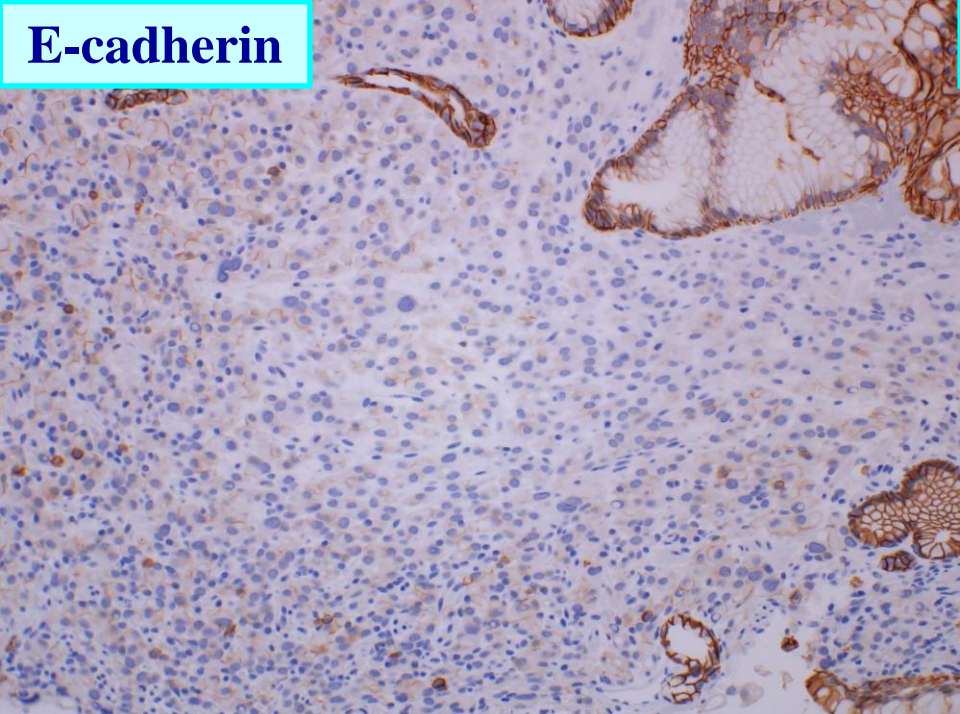
鑑別に有用な IHC は？

ER

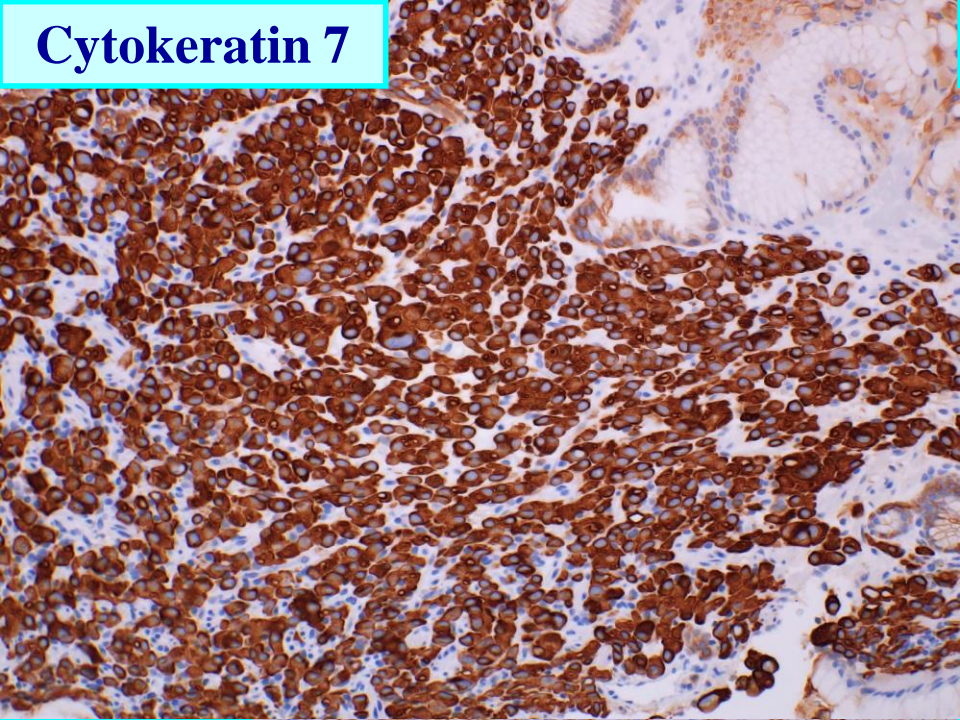
PgR



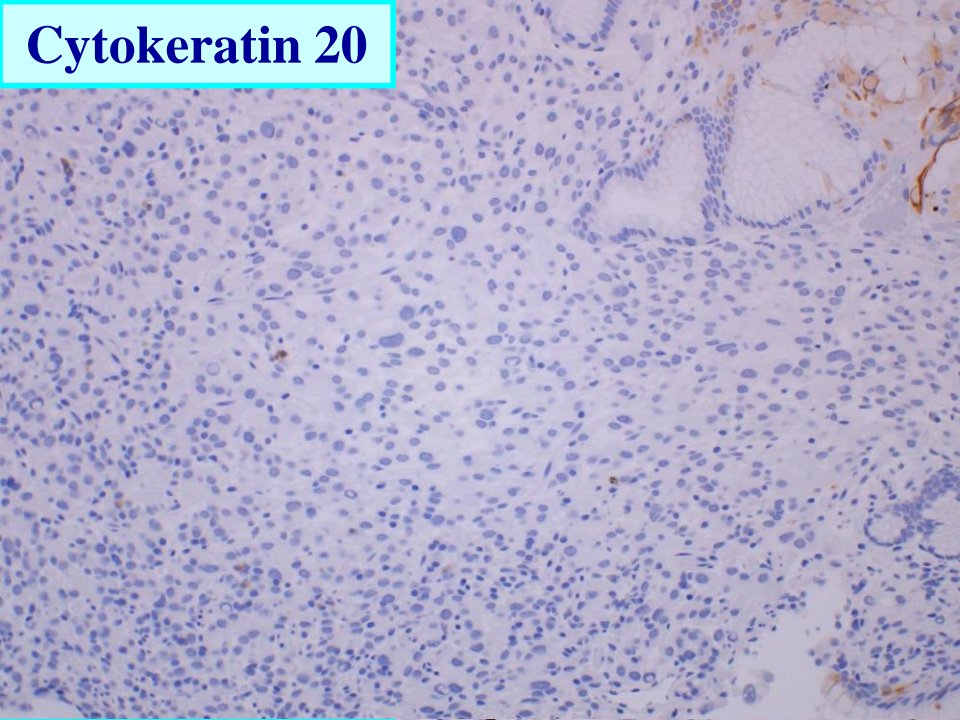
ホルモン受容体の判定は？



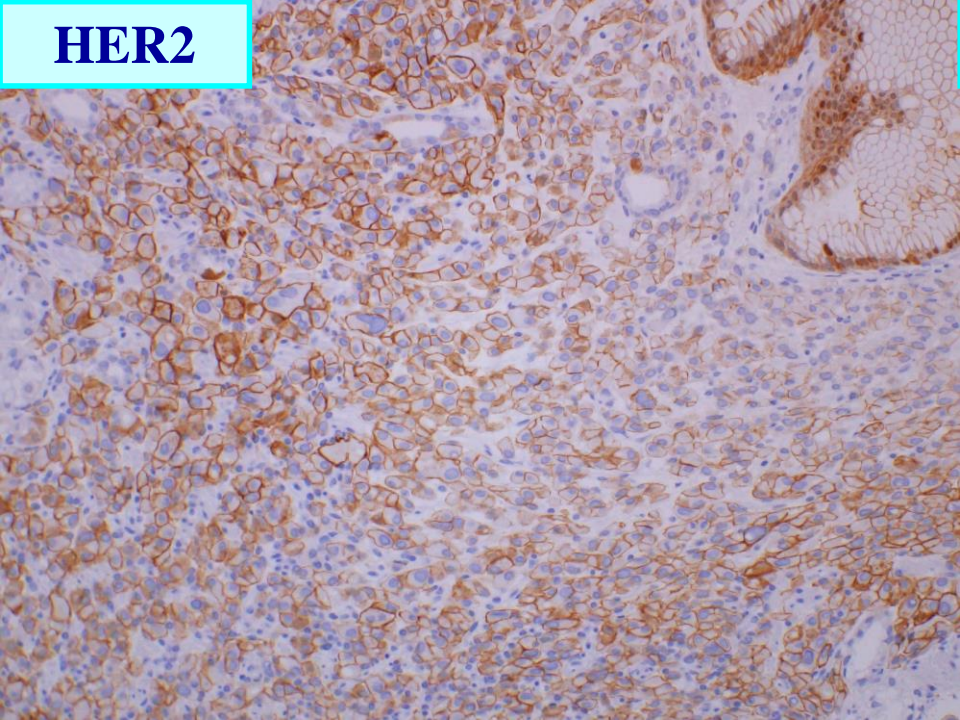
Cytokeratin 7



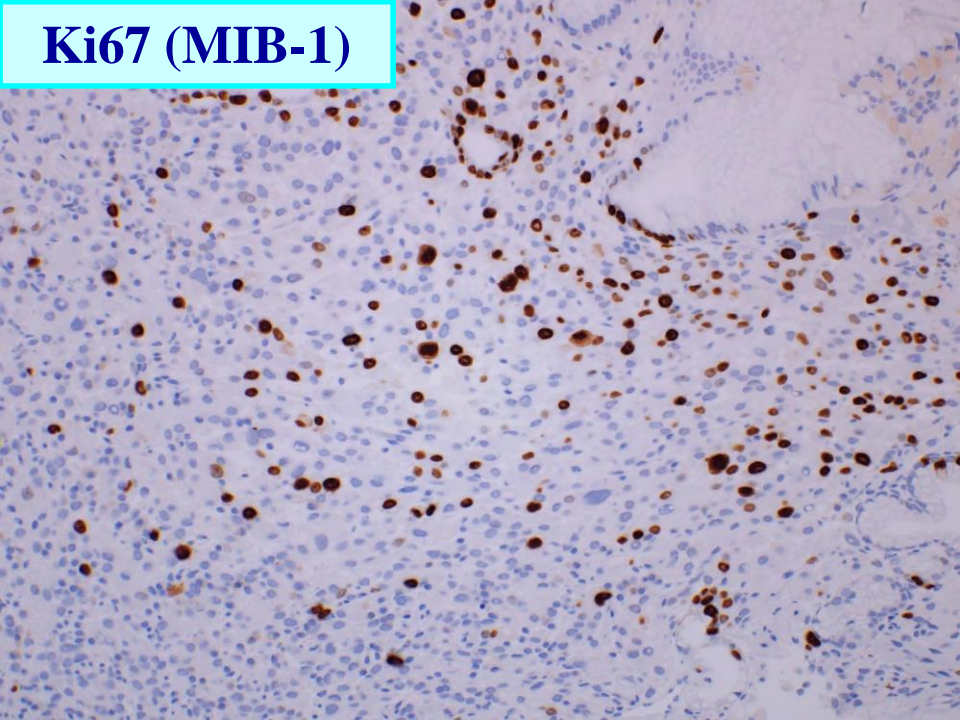
Cytokeratin 20



HER2



Ki67 (MIB-1)

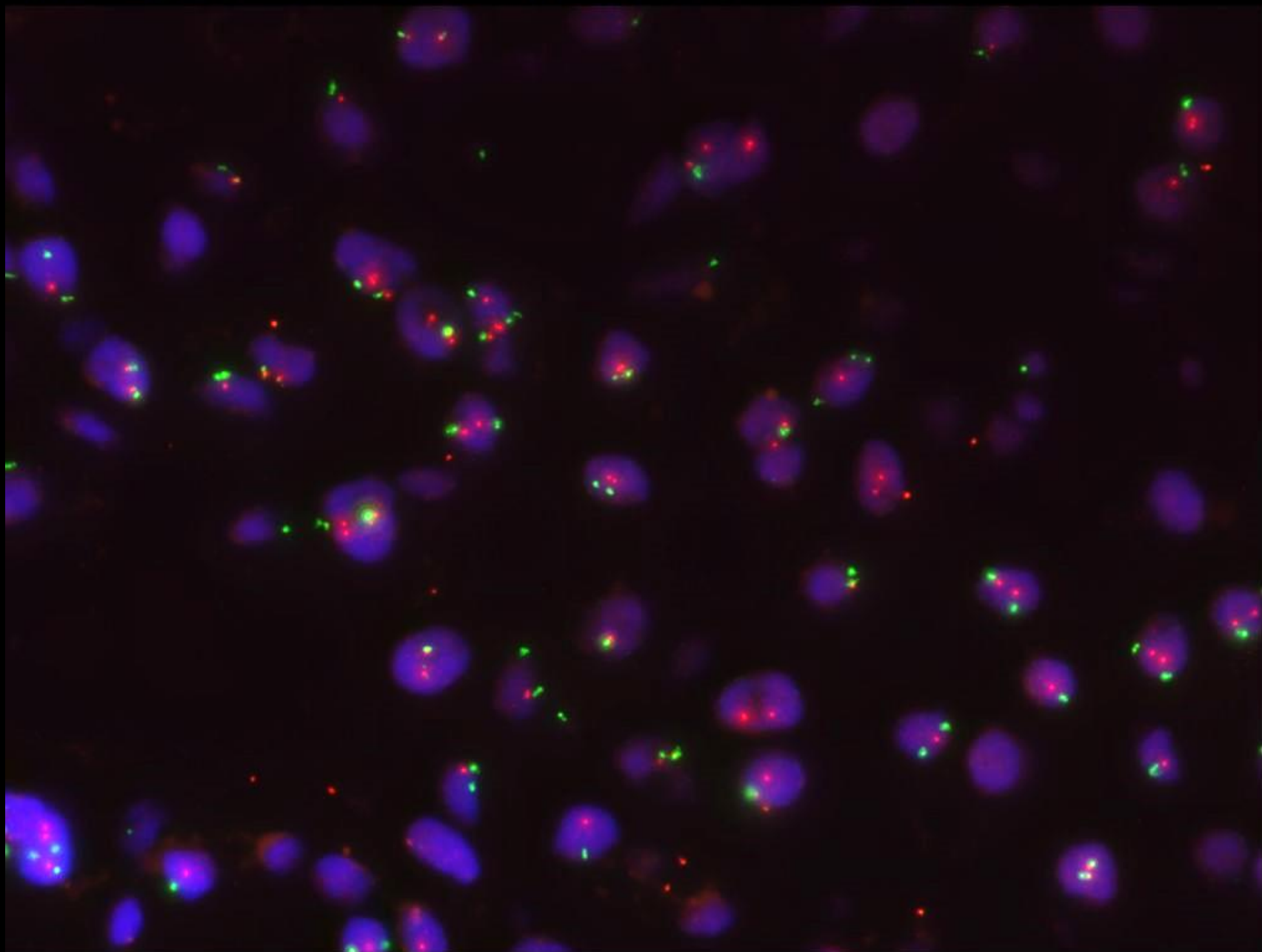


病理診断は？

HER2 (IHC) の判定は？

Ki67 (MIB-1) 標識率は？

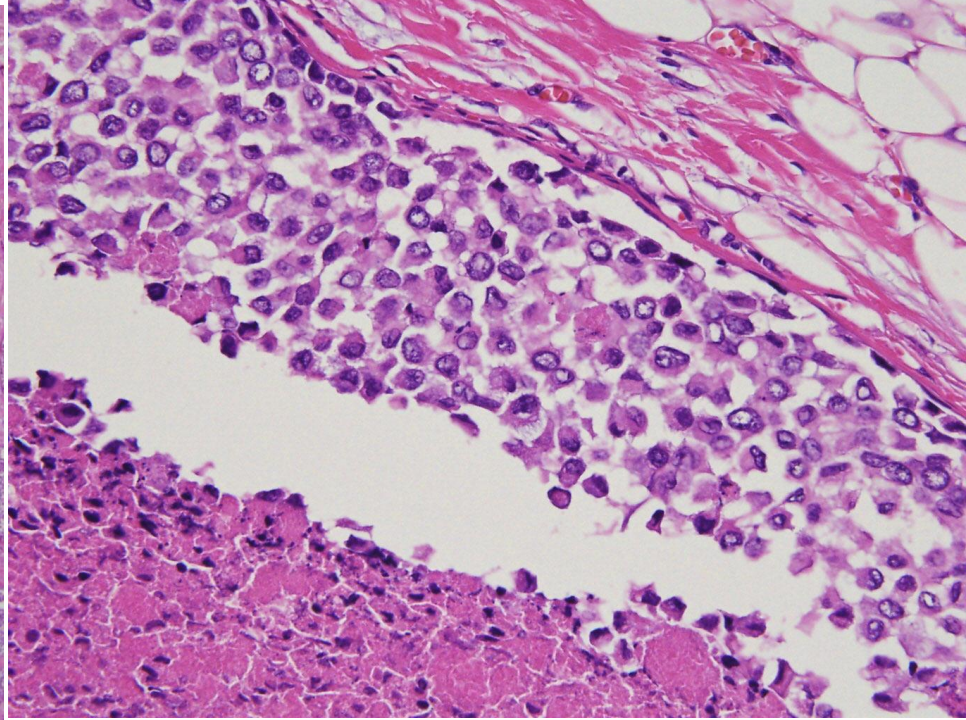
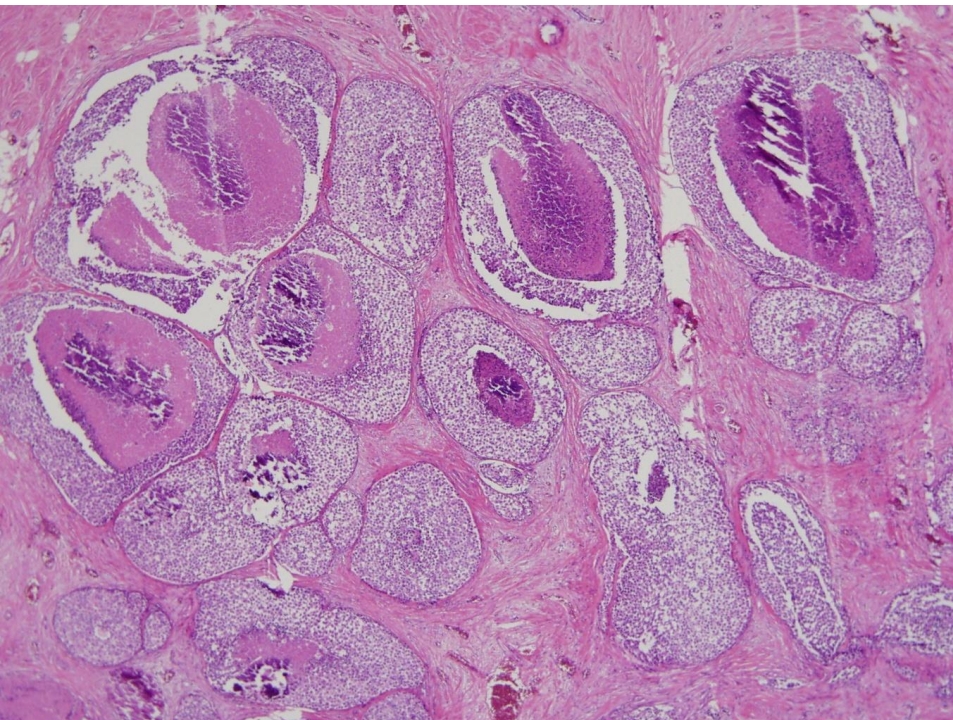
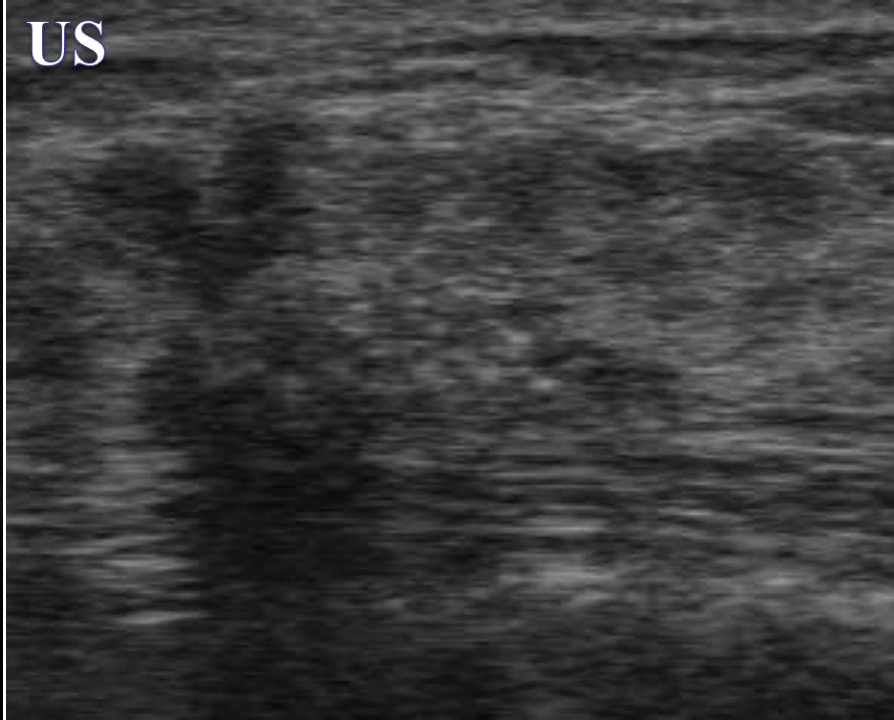
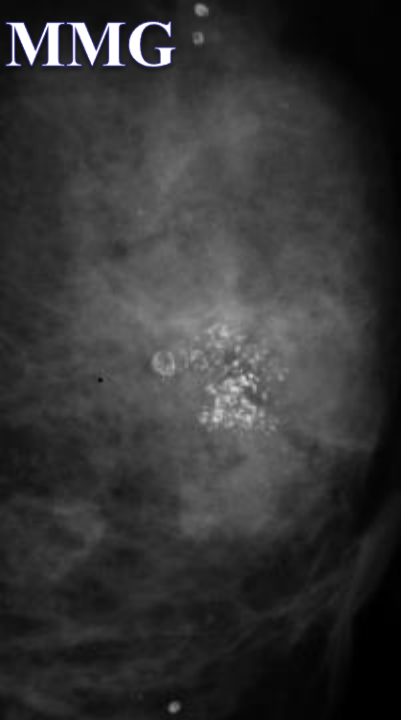
HER-2 SpectrumOrange / CEP17 SpectrumGreen

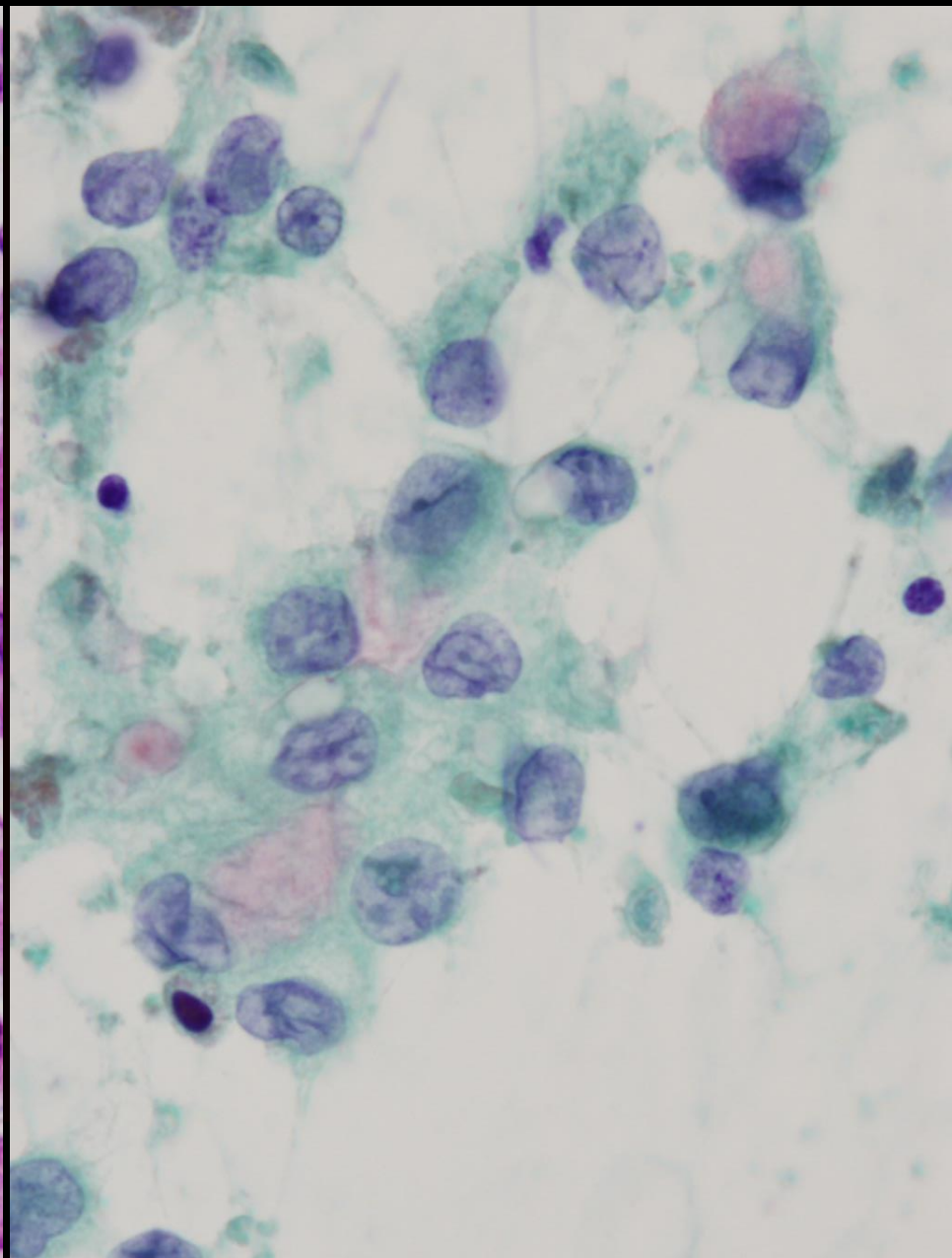
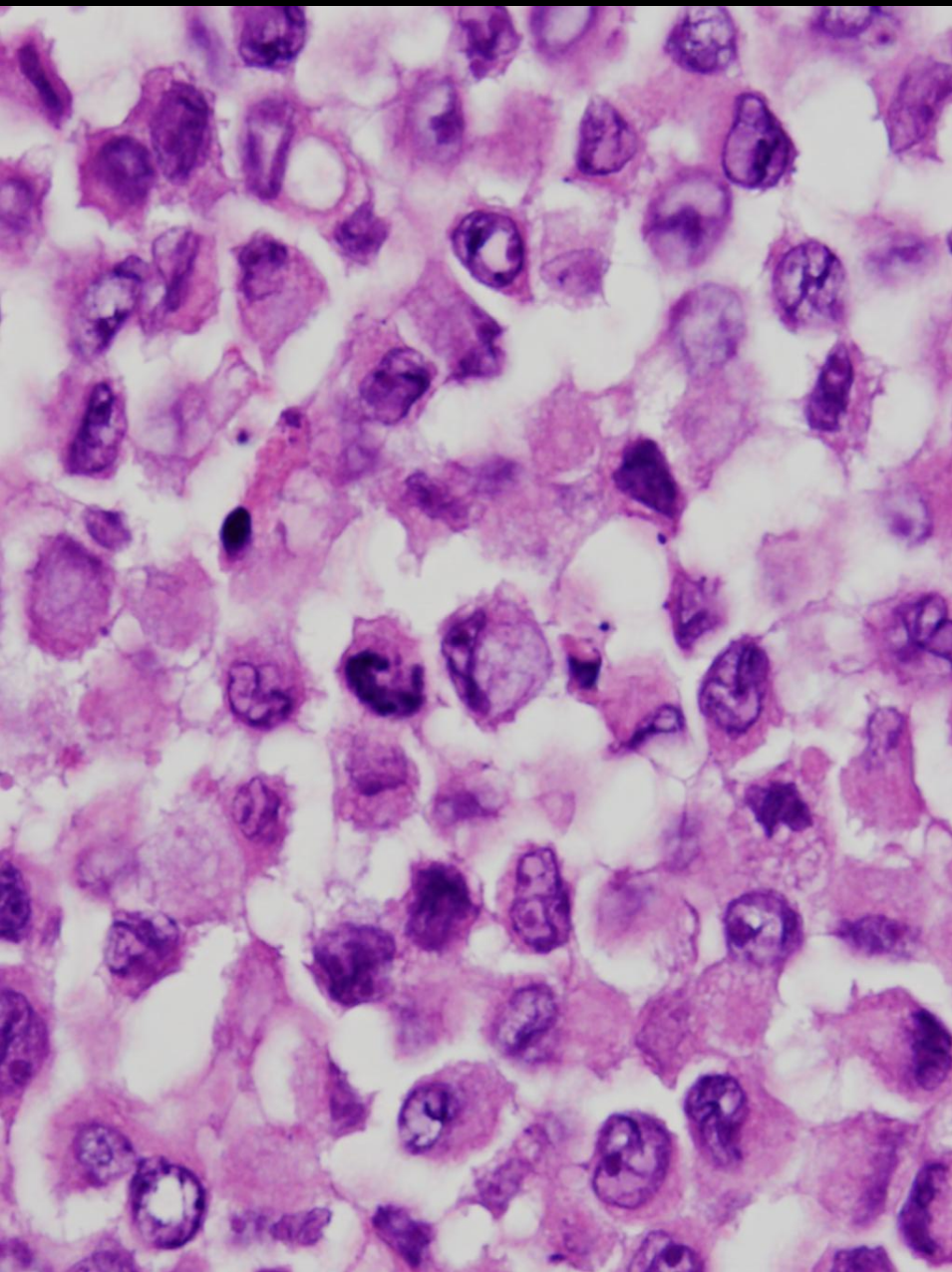


x63

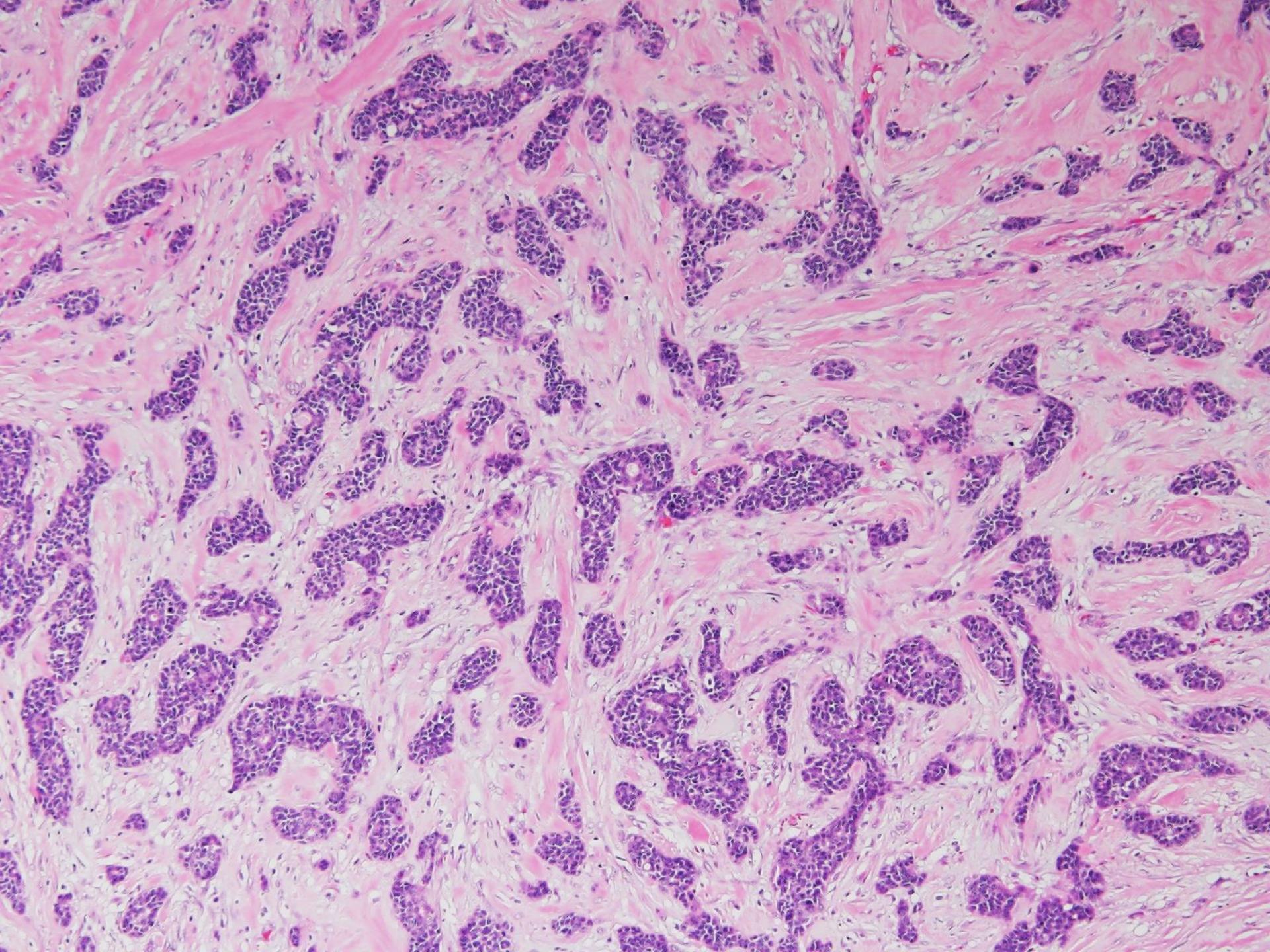
HER2 (FISH) の判定は？

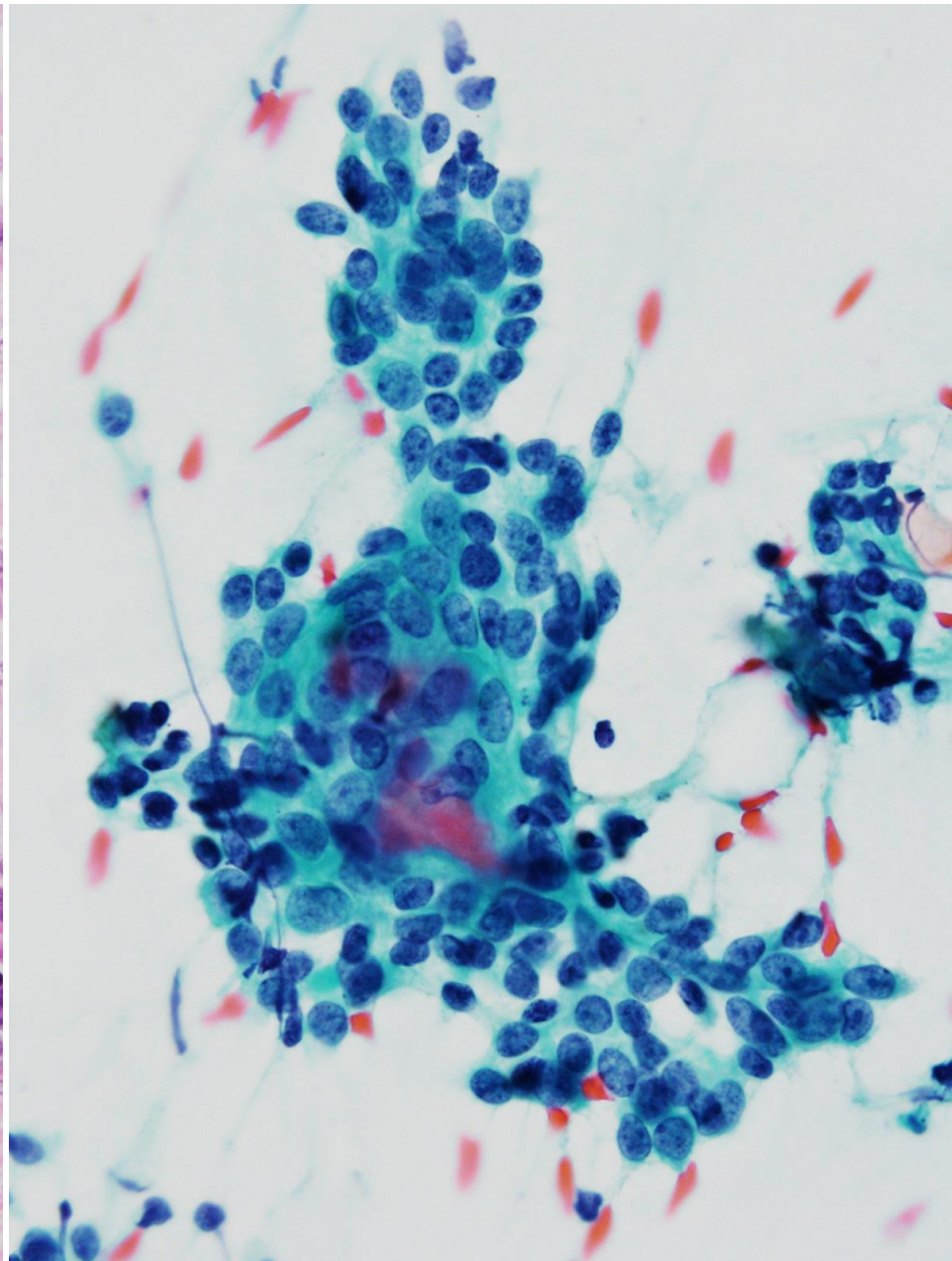
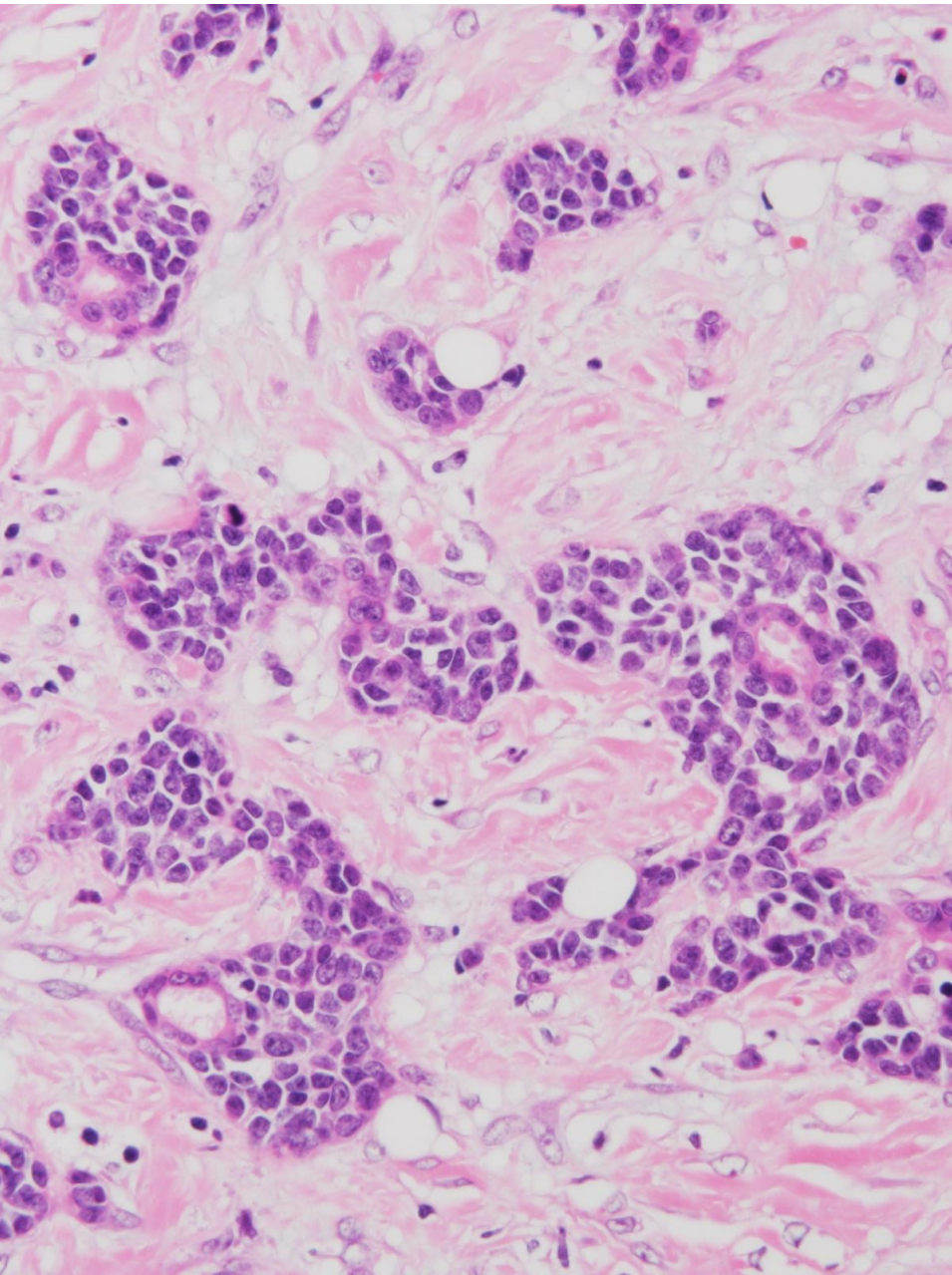
病理診断編 1



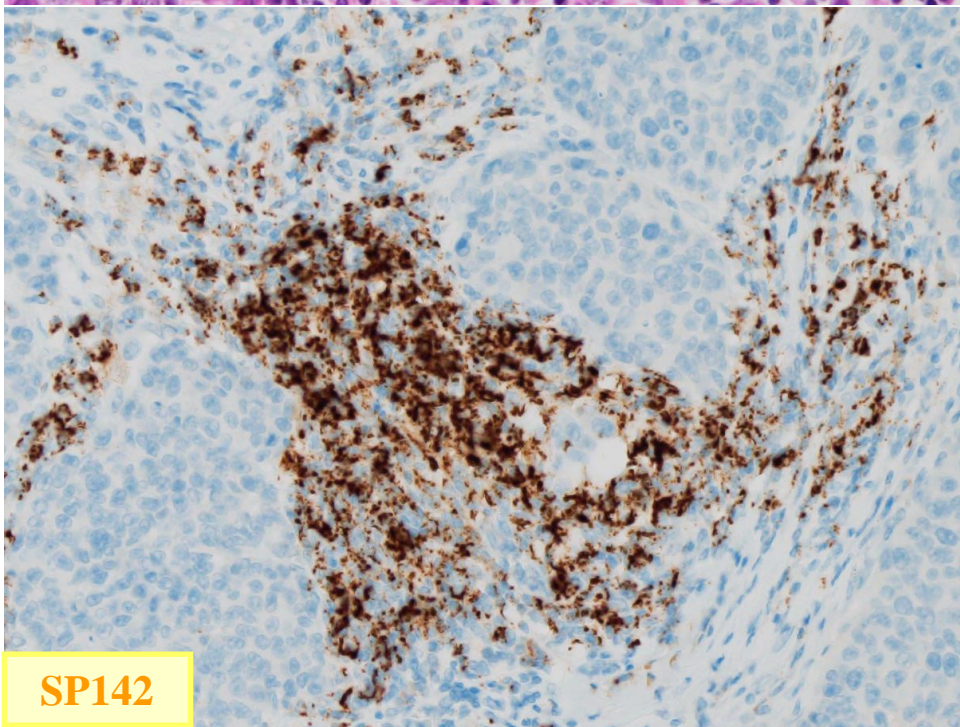
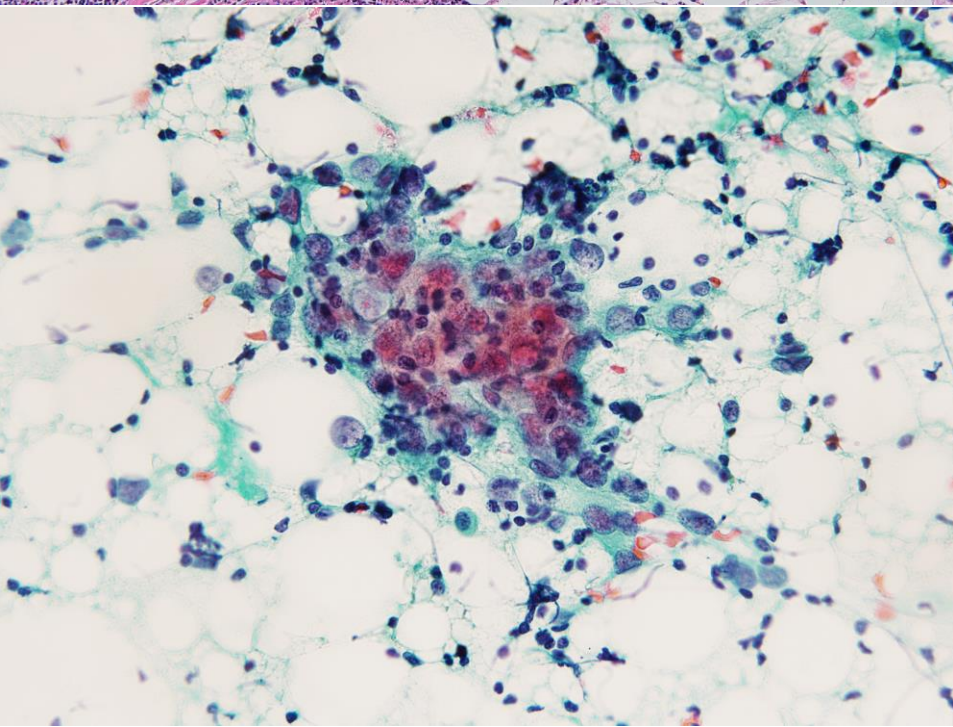
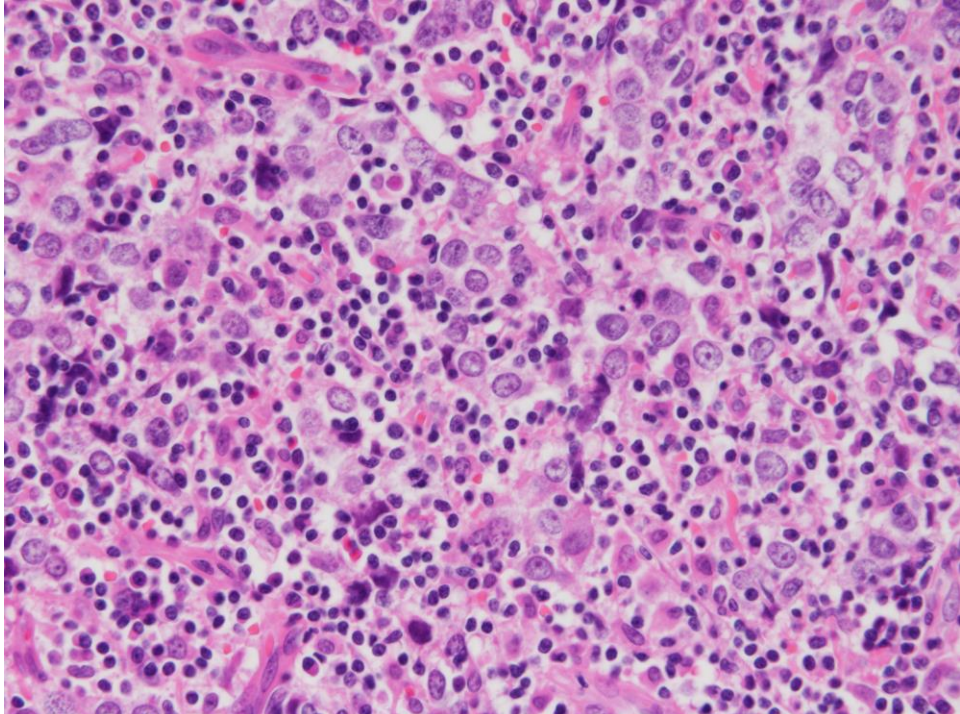
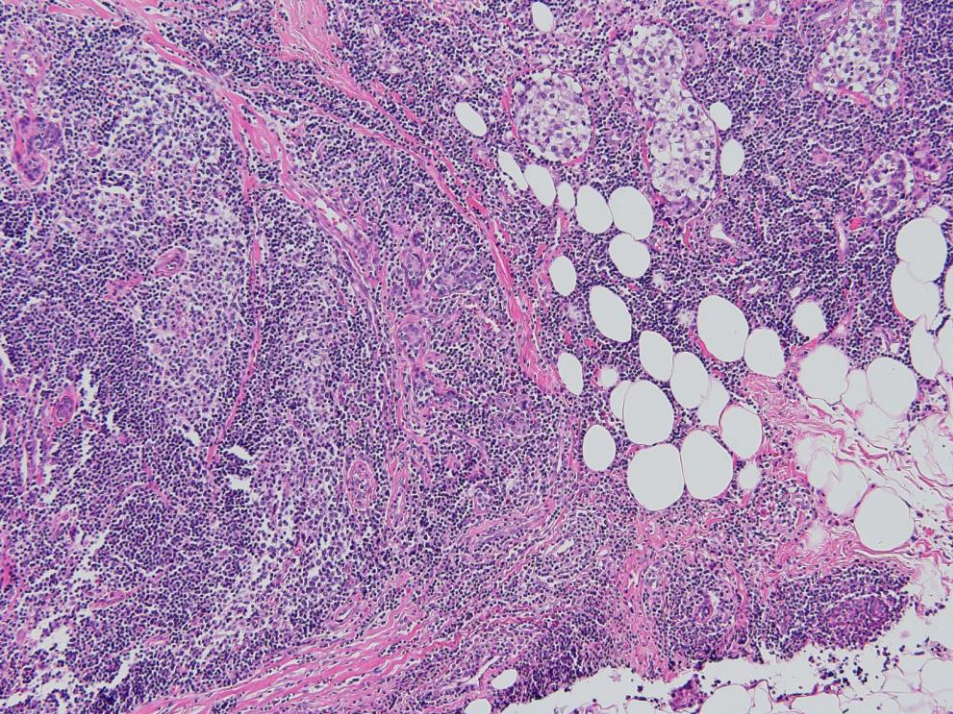


病理診断編 2





病理診断編 3



SP142

SP142 の判定は？